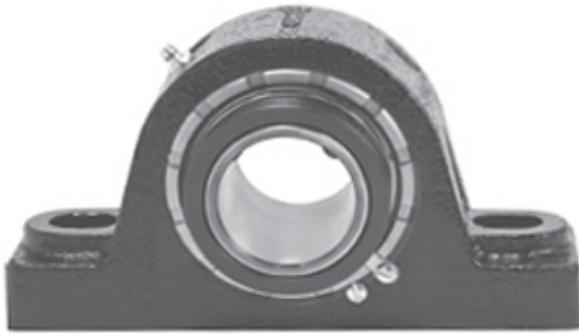




CEP BEARING COMPANY

2.188 Inch | 55.575 Millimeter x 4.125 Inch |
104.775 Millimeter x 2.5 Inch | 63.5 Millimeter
REXNORD ZA520372 Pillow Block Bearings



Bearing No. ZA520372

ZA520372 Bearing 2D drawings and 3D CAD models

Category	Pillow Block Bearings
Inventory	0.0
Manufacturer Name	REXNORD
Minimum Buy Quantity	N/A
Weight	6.99
EAN	0698210025564
Product Group	M06288
Number of Mounting Holes	2
Mounting Method	Concentric Collar
Housing Style	2 Bolt Pillow Block
Rolling Element	Spherical Roller Bearing
Housing Material	Cast Steel
Expansion / Non-expansion	Non-expansion
Mounting Bolts	5/8 Inch
Relubricatable	Yes
Insert Part Number	5203U
Seals	Clearance Seal
Housing Configuration	1 Piece Solid
Inch - Metric	Inch
Other Features	Double Row Double Collar With Set Screw
Long Description	2 Bolt Pillow Block; 2-3/16" Bore; 2-1/2" Base to Center Height; Concentric Collar Mount; Spherical Roller Bearing; Relubricatable;



CEP BEARING COMPANY

	Cast Steel; Clearance Seal; Non-expansion
Category	Pillow Block
UNSPSC	31171511
Harmonized Tariff Code	8483.20.40.80
Noun	Bearing
Keyword String	Pillow Block
Manufacturer URL	http://www.rexnord.com
Manufacturer Item Number	ZA520372
Manufacturer Internal Number	6802556
Weight / LBS	15.4
B	2.5 Inch 63.5 Millimeter
Nominal Bolt Center to Center	6.8 Inch 171.5 Millimeter
Bolt Spacing Maximum	0 Inch 0 Millimeter
Bolt Spacing Minimum	0 Inch 0 Millimeter
D	4.125 Inch 104.775 Millimeter
Actual Bolt Center to Center	6.8 Inch 171.5 Millimeter
d	2.188 Inch 55.575 Millimeter